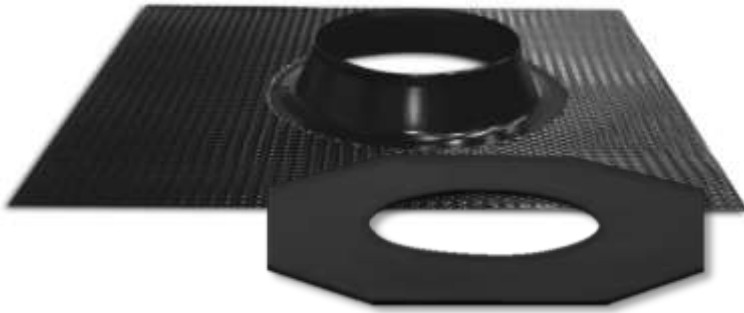




# SOLATUBE Pitched tile flashing (aluminium)



## Parts list

|  | Qty |
|--|-----|
| Pitched roof tile flashing<br>(for use with profiled roof tiles) | 1   |
| Flashing insulator   | 1   |
| Solafoam strip   | 1   |

Note: Do not use Portland Cement based mastic, grout or alkaline materials with this product. Caustic alkalis present in fresh, unhardened mortar will attack the flexible aluminium base.

First complete the Solatube 160DS & 290DS installation guide Steps 1- 4

### Step 1 – affix the flashing insulator

Align the flashing insulator to the underside of the roof flashing, matching the centres, and apply the aluminium tape provided firmly along each outside edge of the flashing insulator to securely fix the flashing insulator to the flashing (**diagram A**). Later, when the top tube is inserted into the flashing up-stand, the flashing insulator will be stretched around the tube, creating a seal.

### Step 2 – remove the roof tiles

On the roof, locate the nail/wire probe and remove sufficient tiles to allow you to place the roof flashing onto the roof battens. Leave sufficient tiles below to allow the flashing to overlap adequately onto these tiles. Centre the top tube assembly over the nail/wire probe and mark around the outside circumference onto the felt (**diagram B**).

### Step 3 – cut the roof felt

Place the top tube assembly safely and securely to one side. Neatly cut the roof felt and, if necessary, any obstructing batten(s) across the diameter of the marked circle. Replace the flashing over the hole and temporarily insert the top tube assembly into the up-stand and through the flashing insulator and felt to check clearance and to rotate the angle the top tube assembly towards the bottom tube assembly in the ceiling, if required.

### Step 4 – position the roof flashing

Fold the top edge of the flashing over the highest exposed roof batten or fix with a screw to temporarily anchor the flashing in position, making sure the centre of the flashing up-stand lines up with the opening in the roof felt. Mould the aluminium flashing to fit the shape and profile of the tiles beneath.

### Step 5 – seal the roof flashing

Remove the backing from the Solafoam strip and adhere it to the flashing surface, placing it so it will be covered and compressed by the removed tiles. Replace and secure the removed tiles, ensuring a 40mm gap is left behind the turret up-stand to allow the top tube assembly, dome ring and dome to be inserted into the flashing up-stand – note you may need to trim the tiles to achieve this. Mould the flashing as necessary to fit the shape and profile of the tiles with which it is in contact (**diagram C**). Ensure all tiles are firmly in position and the roof is fully watertight.

Diagram A



Diagram B

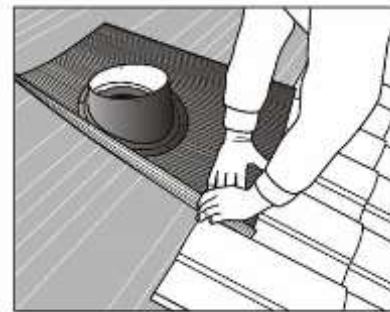
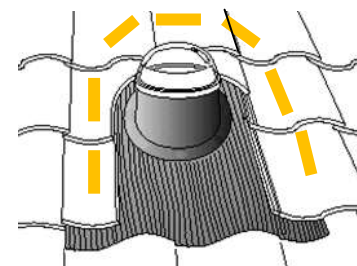


Diagram C



Solafoam strip under the tiles

Please now continue to Step 6 of the Solatube 160DS & 290DS installation guide